

| November 2025

Prepared by CWPA Planning & Architecture

RECEIVED: 07/11/2025

CWPA

Planning & Architecture



ENVIRONMENTAL IMPACT ASSESSMENT REPORT (EIAR) – APPENDIX 1.

Proposed development includes the *“Construction of four aviation-related cargo handling units, with ancillary office space (GFA c. 34, 623.6 sqm) located on the townland of Huntstown”*.

Applicant: D.A. Terminal 3 Ltd.

Appendix 1

A3 Size of selected EIAR Graphics prepared by
CWPA Planning & Architecture.

RECEIVED: 07/11/2025



RECEIVED: 07/11/2025

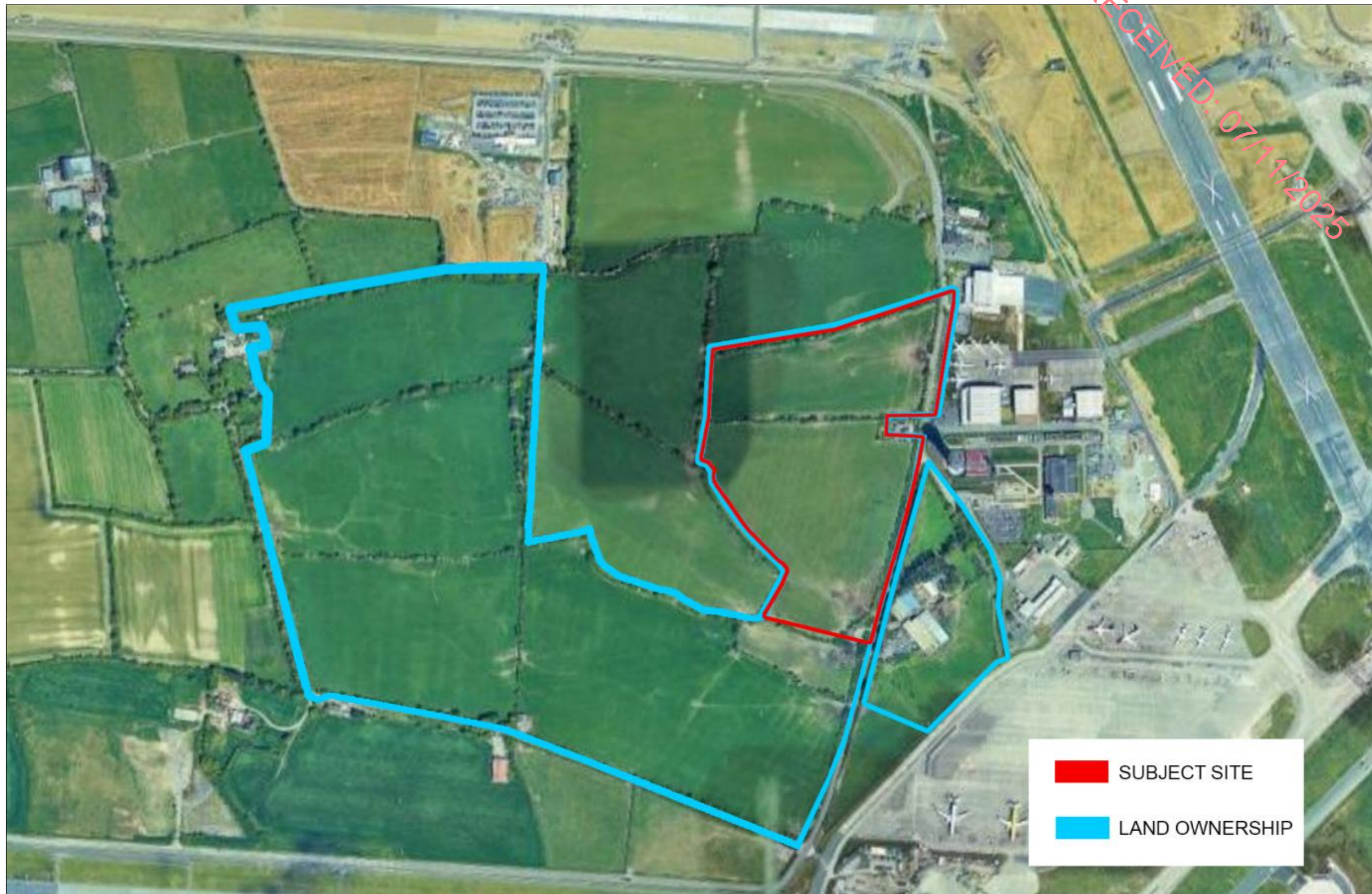


Fig 1: Site Location Map (subject site outlined in red with total land ownership outlined shown in blue).

Source: CWPA.

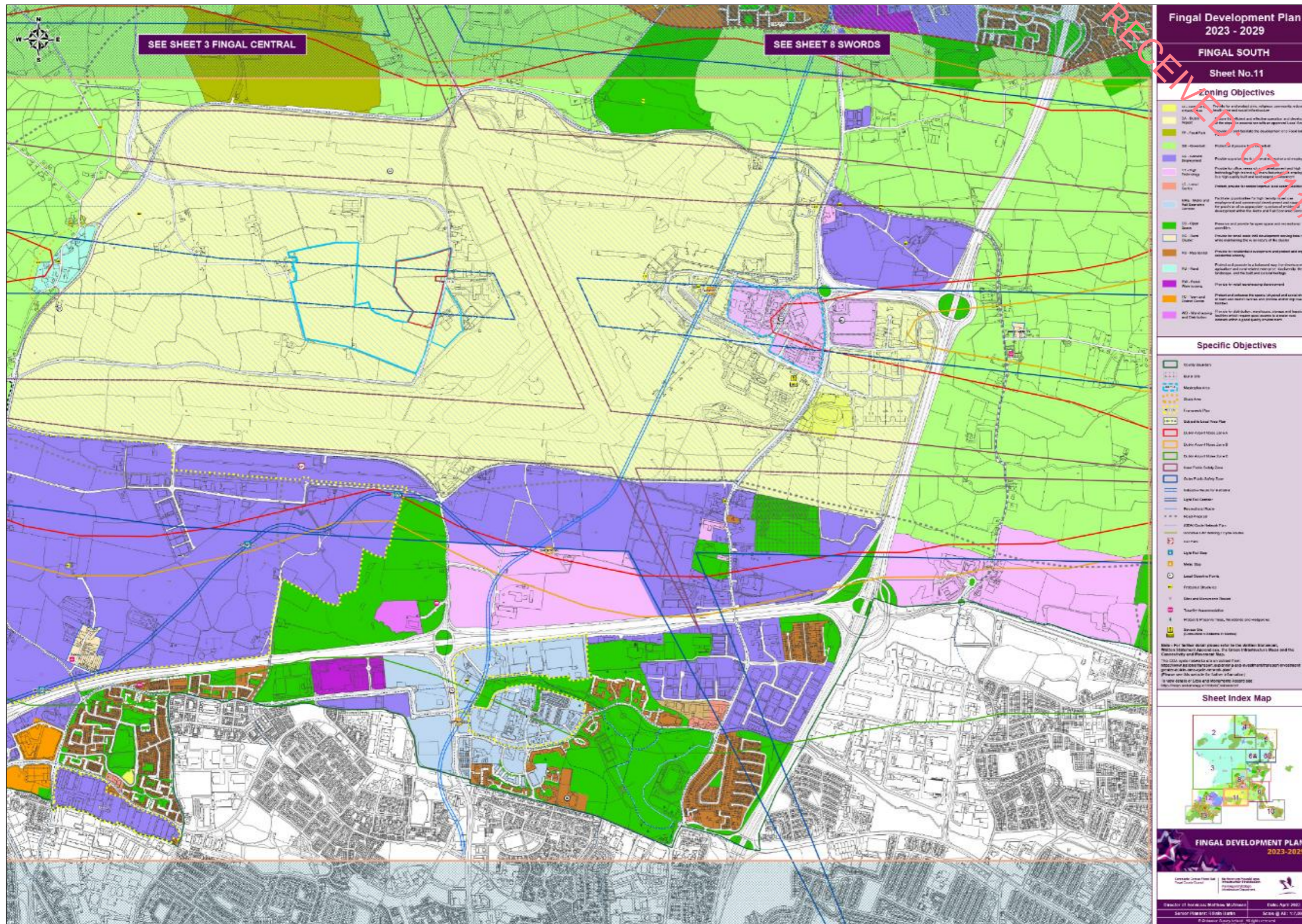


Fig 2: DA Zoning (subject site outlined in red with total land ownership outlined shown in blue).

Source: Fingal Development Plan 2023 – 2029.



RECEIVED: 07/11/2025

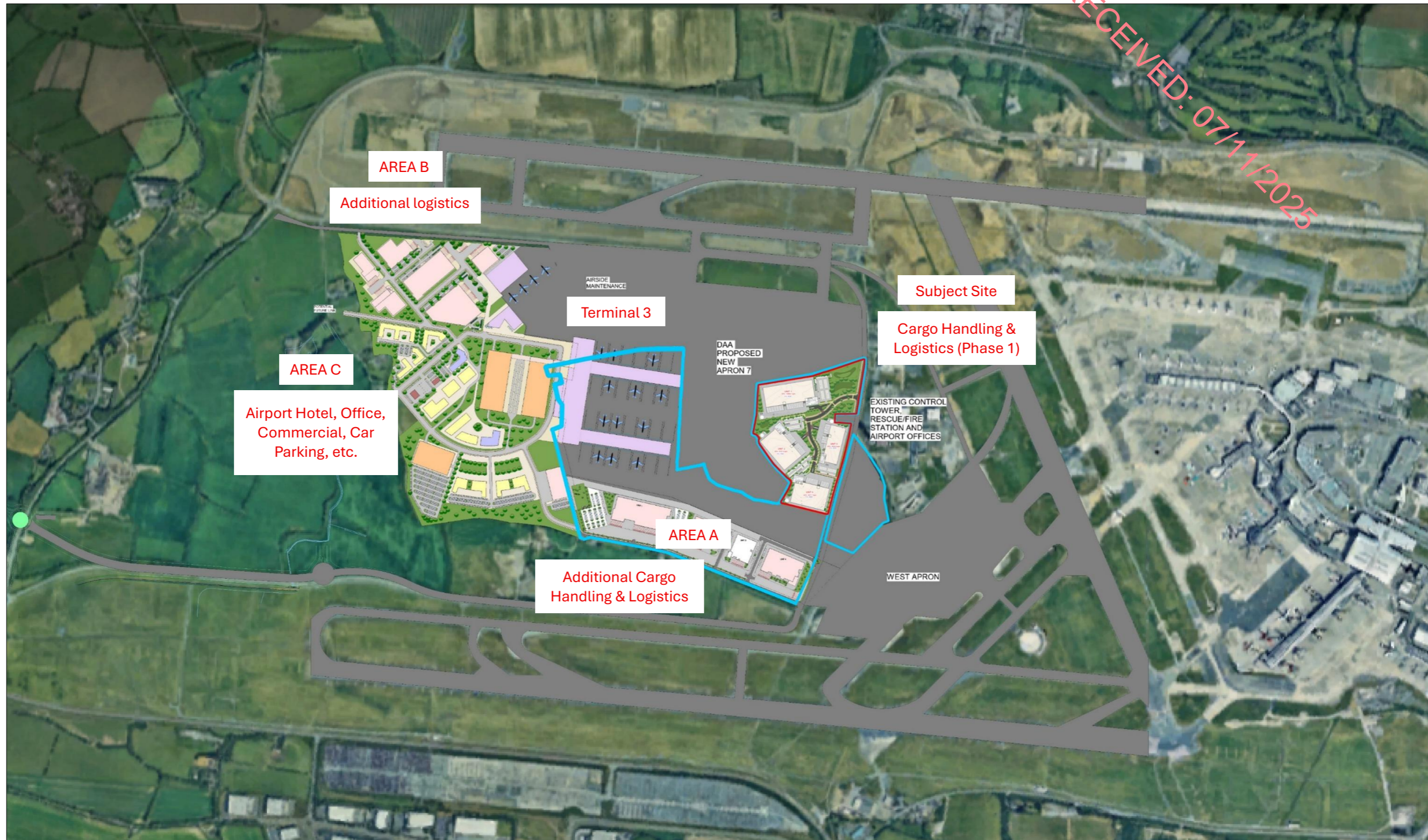


Fig 3: Concept Plan Layout (with total Land Ownership shown in blue).

Source: CWPA.



RECEIVED: 07/11/2025

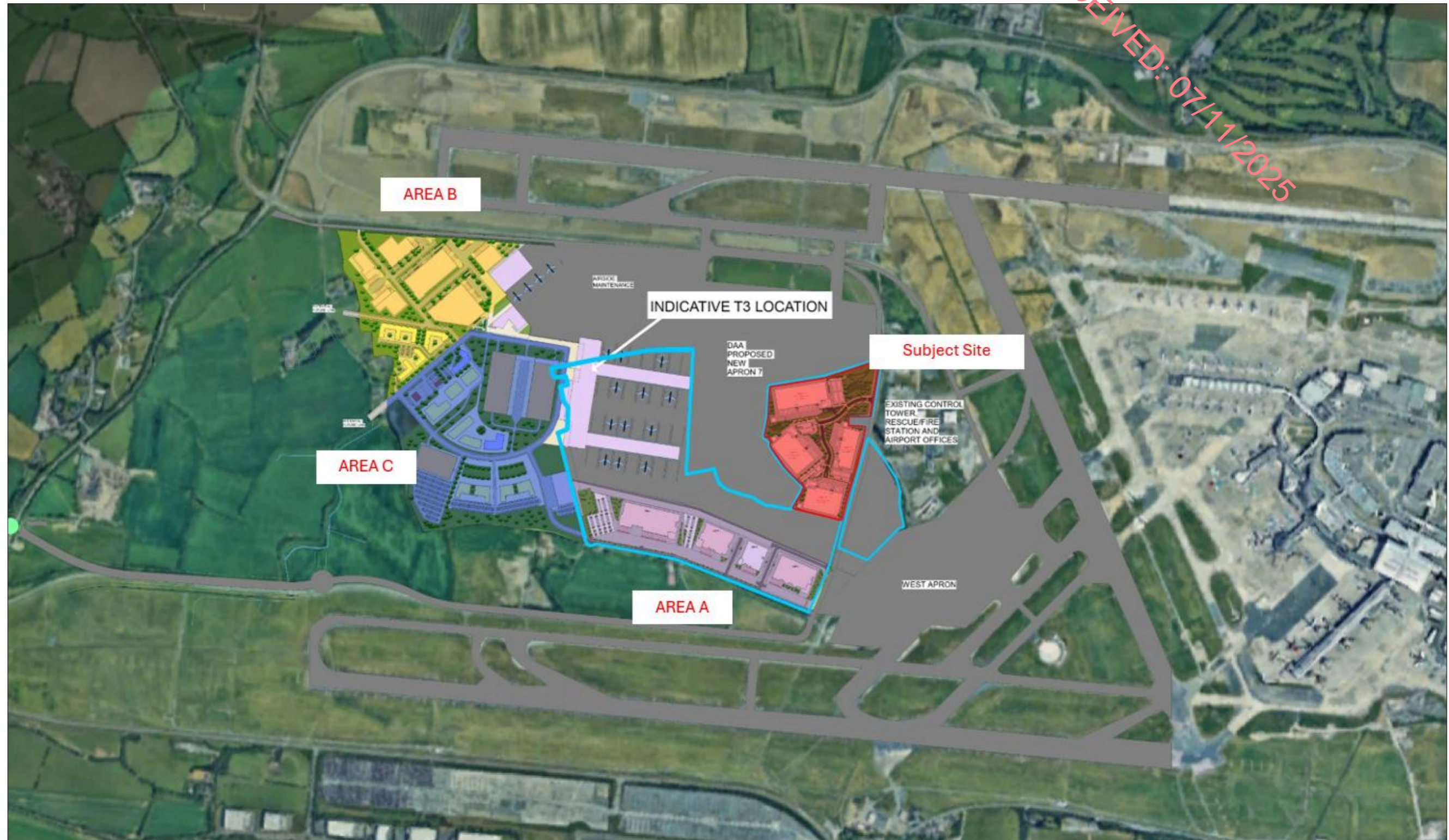


Figure 4: Concept Plan (September 2025)

Source: CWPA



RECEIVED: 07/11/2025

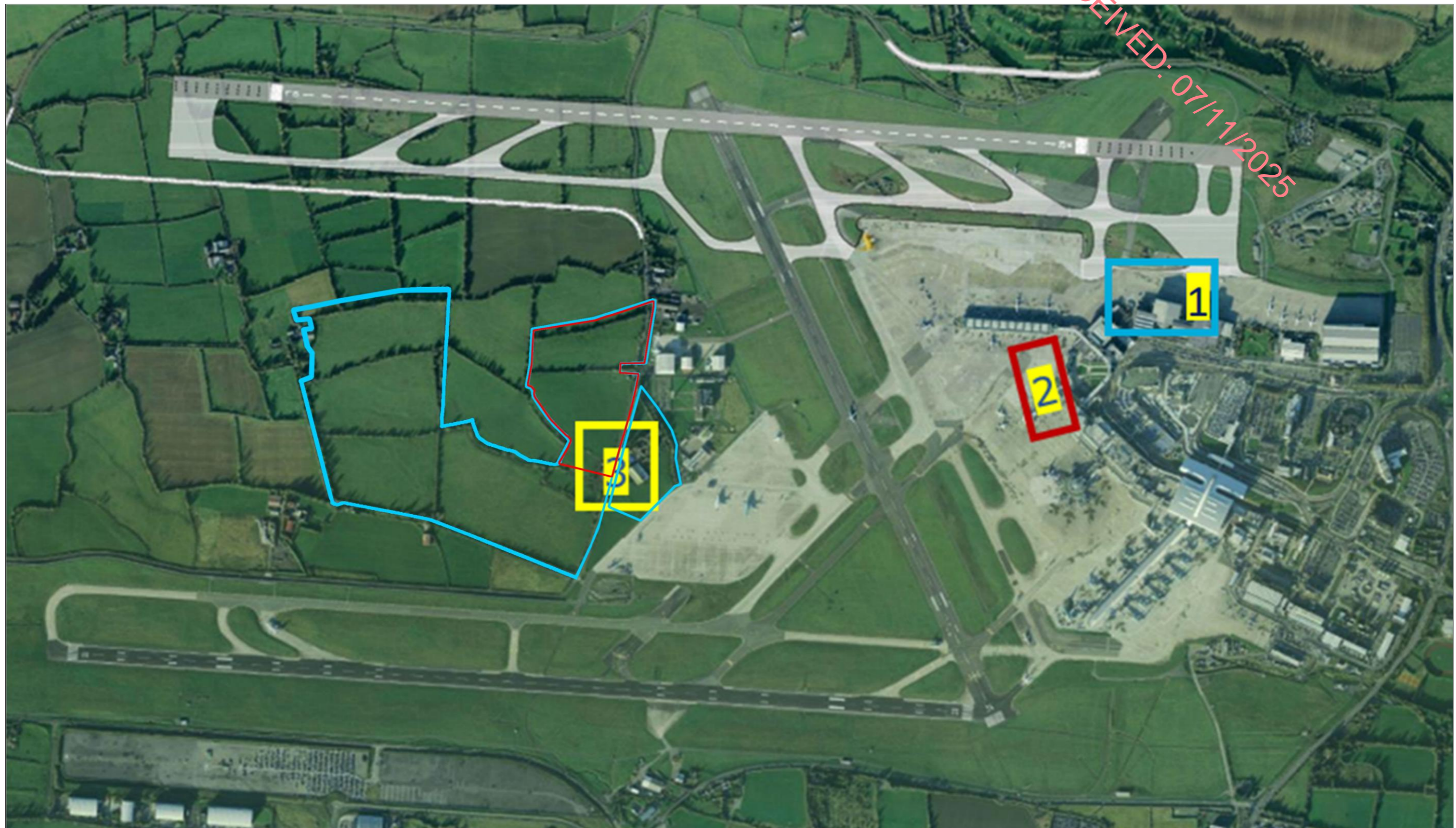


Figure 5: Possible Terminal 3 Locations.

Source: Oxford Economics (DTTAS Review of Future Capacity Needs) Report 2018.



RECEIVED: 07/11/2025



Figure 6: Indicative concept layout for DA Terminal 3 lands with DAA Strategy Option for a third terminal (passenger building and piers).

Source: CWPA.



RECEIVED: 07/11/2025



Figure 7: Indicative concept layout for DA Terminal 3 lands with DAA Strategy Option for a third terminal (passenger building and piers).

Source: CWPA.

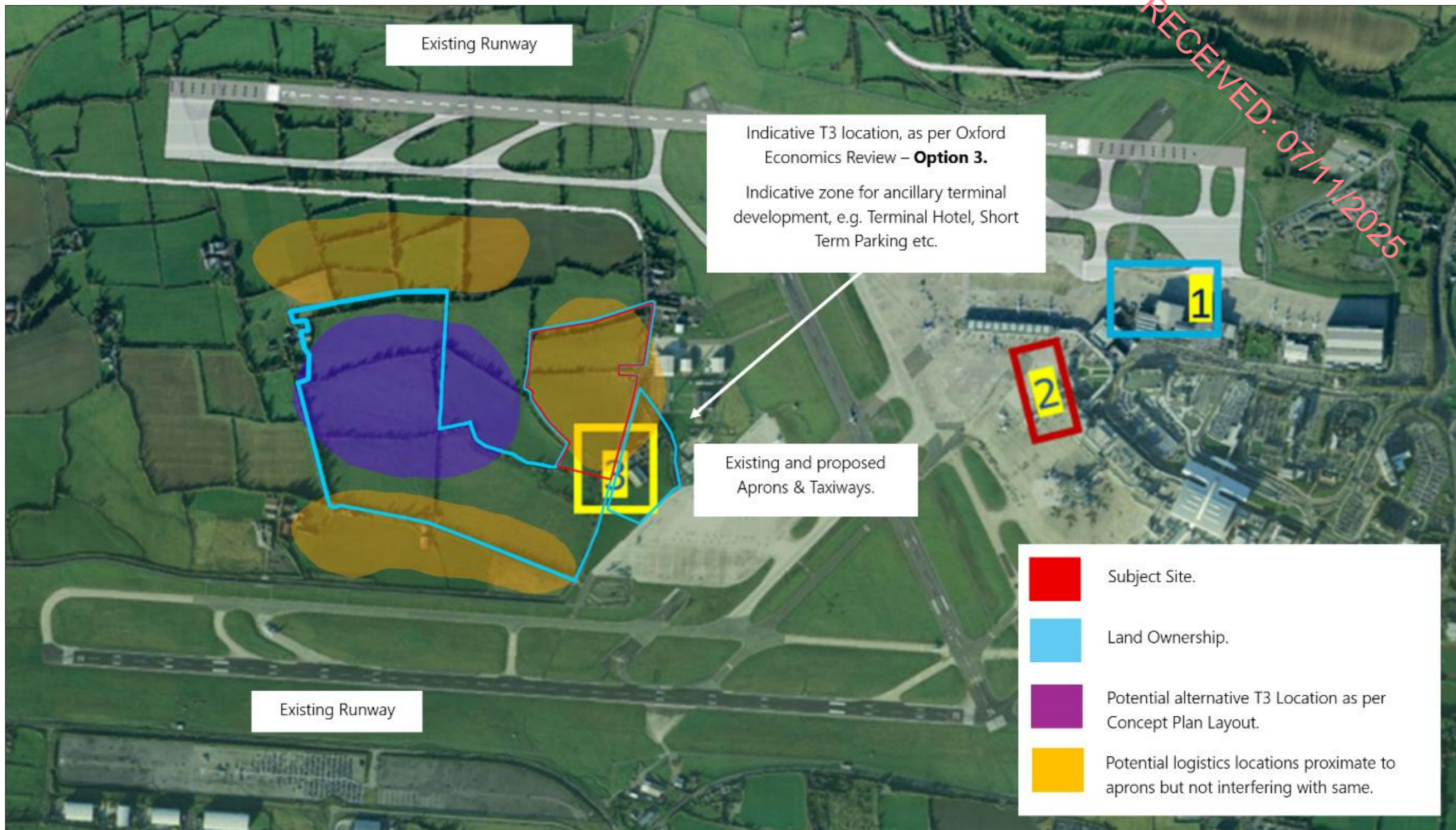


Figure 8: Indicative Locations for Aviation Related/ DA Land Uses.

Source: Oxford Economics (DTTAS Review of Future Capacity Needs) Report 2018.



RECEIVED: 07/11/2025



Figure 9: CGI Image of Proposed Development.

Source: CWPA.



Figure 10: Selected CGI Image of Proposed Development.

Source: CWPA.



RECEIVED: 07/11/2025



Figure 11: Selected CGI Image of Proposed Development.

Source: CWPA.



Fig 12: Dublin Airport LAP Map No. 2 (Subject Site outlined in red with Land Ownership shown in blue).

Source: CWPA.

